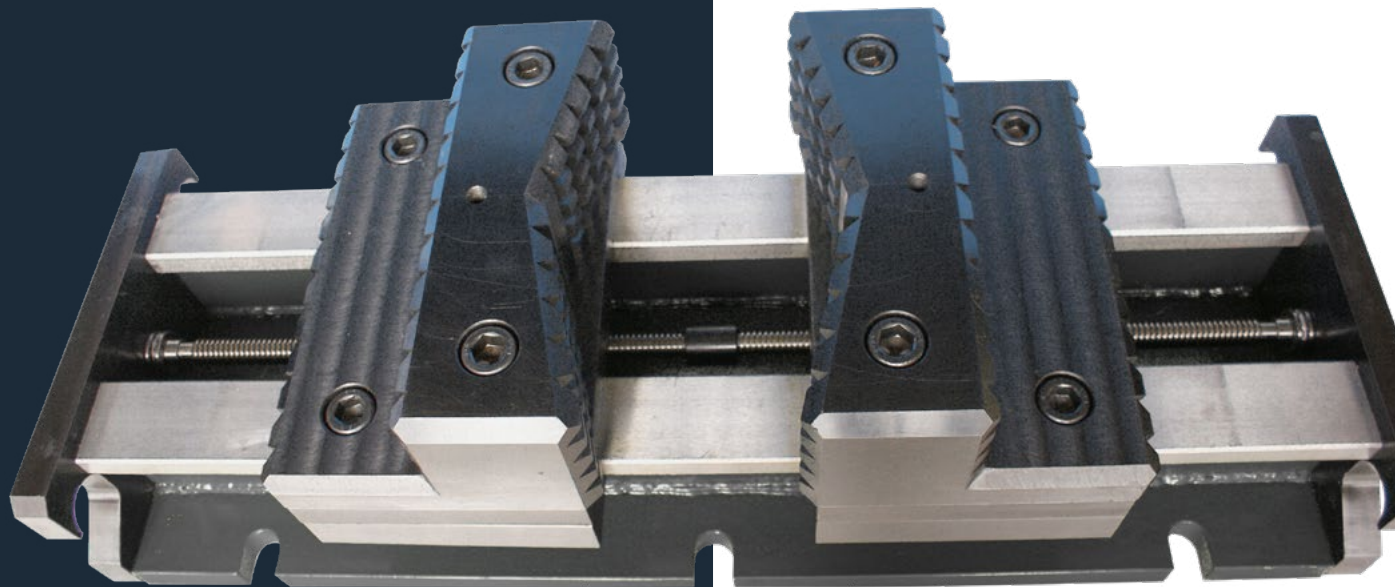


MACHINE VICES

Self-centring

D-SCW



UMETA
fast. safe. easy.

D-SCW-600



MACHINE VICES

Self-centring

D-SCW

The D-SCW vices are used for clamping heavy and large workpieces to a work surface. The D-SCW Series feature a self-centring design and hardened steel jaws with reversible jaw surfaces for clamping both round and parallel workpieces.

With their strong and durable construction, these vices feature a clamping range up to 1.500 mm.

Custom made vices are also available.

FEATURES

- Self-centring
- Hardened reversible steel jaws
- For clamping of round and parallel workpieces
- Strong and durable construction creates high stability
- Clamping range up to 1500 mm



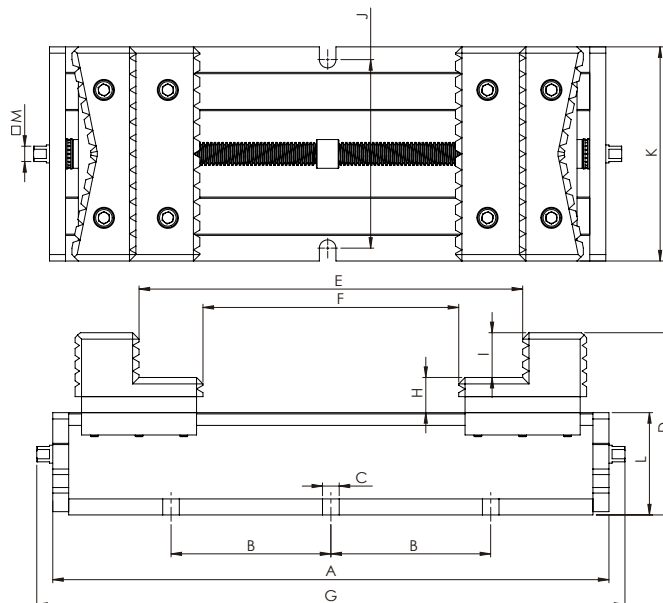
MACHINE VICES

Self-centring

D-SCW

Technical specifications

Model	D-SCW-600	D-SCW-1000	D-SCW-1500
A	870	1270	1270
B	250	250	250
C	26	26	26
D	285	285	285
E	600	1000	1500
F	400	800	1300
G	930	1330	1830
H	55	55	55
I	70	70	70
J	295	295	295
K	335	335	335
L	160	160	160
M	24	24	24
Weight (kg)	228	278	342



All information is subject to printing-, typing errors and modifications.